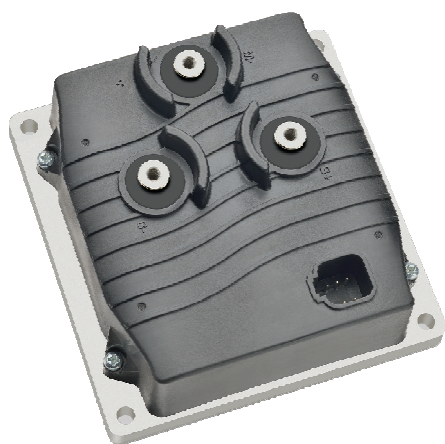


## 1216 Motor Controller



**1216 motor controllers** are programmable, a low cost, high performance solution for pump motor control applications including scissor lifts, lift trucks, mobile booms, or any pumping application where 24-volt, series motor, speed control is employed. 1216 controller is a programmable motor controller, it can program the controller parameters by handheld programmer for different generation Genie scissor lift.

### Features :

- Current limiting: 360 Amps
- Operating voltage: 12 to 32 Volts DC
- Input voltage range: 0 to 5 Volts DC
- Over/Under voltage, Over/low Temperature, Real time current protect.

### Applications :

- Material handling lifts
- Scissor lifts
- Lift trucks
- Mobile booms
- Appropriate pump motor applications

